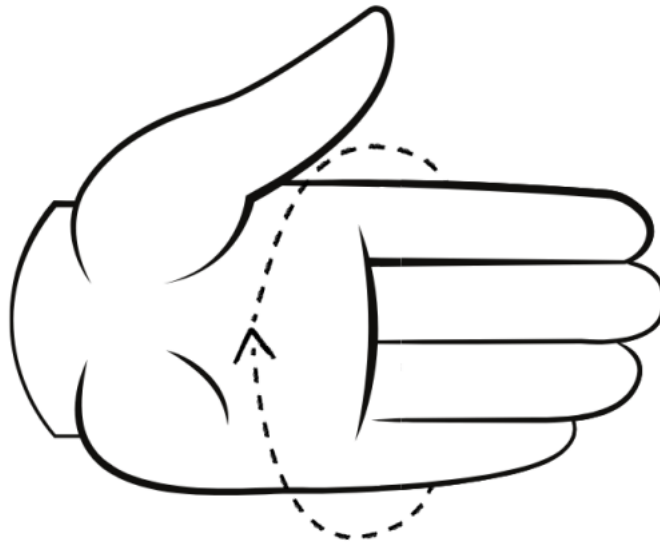


PORSCHE

Porsche Classic Work Gloves

Instructions for determining your optimum Porsche glove size:

Place a measuring tape or string around your flat and slightly open hand at the widest point. Make sure that the tape is loose but not too loose below the knuckles, leaving the thumb out. Now run the tape measure once around the palm of your hand. Then note the circumference of your hand and take the corresponding size from the table.



PORSCHE GLOVE SIZE CHART

Hand circumference (cm)	Glove size	Size
17.5 - 19	7	S
19 - 21.5	8	M
21.5 - 24	9	L
24 - 26.5	10	XL
26.5 - 29	11	XXL